



国家强基工程示范企业
Demonstration Enterprise of National
Consolidation of Industrial Foundation Program



专业 专注 创新 极致
Professional Concentrated Innovative Extreme



服务热线 400 116 2006
www.likechuan.com

青岛力克川

地址: 中国青岛高新技术产业开发区思源路36号

电话: +86-532-55676157

国内邮箱: lkc2006@likechuan.com

海外邮箱: lkc@lkc2006.com

LKC Qingdao

ADD: No.36, Siyuan Road, Qingdao High-tech Industrial Development Zone, China

TEL: +86-532-55676157

Domestic E-mail: lkc2006@likechuan.com

Overseas E-mail: lkc@lkc2006.com

本公司保留产品更改权, 如有变动, 恕不另行通知。

We reserve the right to change our products without prior notice.

2023年第1版印刷

液压驱动装置专业制造商

青岛力克川液压机械有限公司
QINGDAO LKC HYDRAULIC MACHINERY CO.,LTD.



Contents

目录

企业简介	< 01 >	Company Profile
发展历程	< 02 >	LKC Development Process
企业荣誉	< 04 >	Enterprise Honor
研发实力	< 06 >	R & D Strength
力克川学院	< 08 >	LKC College
制造与测试	< 09 >	Manufacturing and Testing
微型系列行走马达	< 10 >	Micro Series Travel Motor
小型系列行走马达	< 12 >	Small Series Travel Motor
中型系列行走马达	< 14 >	Medium Series Travel Motor
闭式系统行走马达	< 16 >	Closed System Travel Motor
微型系列回转马达	< 18 >	Micro Series Swing Motor
中小型系列回转马达	< 20 >	Small and Medium Series Swing Motor
LK马达系列	< 22 >	LK Motor Series
应用领域	< 24 >	Applications

Profile Company 企业简介>>

青岛力克川液压机械有限公司2006年成立于青岛高新技术产业开发区，主要从事工程机械、矿山机械、桩工机械、路面机械、高端农用机械、高空作业平台等行业的液压驱动装置的研发、制造、销售与服务。年产能20万台（套），已形成大、中、小、微系列化发展格局，是液压驱动装置专业制造商。

Qingdao LKC Hydraulic Machinery Co., Ltd. was established in Qingdao high tech Industrial Development Zone in 2006. It is mainly engaged in the R & D, manufacturing, sales and service of hydraulic drive devices in construction machinery, mining machinery, piling machinery, pavement machinery, high-end agricultural machinery, aerial work platform and other industries. With an annual production capacity of 200000 units (sets), it has formed a large, medium, small and micro series development pattern. It is a professional manufacturer of hydraulic drive devices.

Culture Corporate 企业文化>>

力克川愿景：创世界液压马达一流品牌
力克川定位：液压驱动装置专业制造商
力克川价值观：专业、专注、创新、极致

LKC Vision: Create a World-class Hydraulic Motor Brand
LKC Positioning: Professional Manufacturer of Hydraulic Drives
LKC Values: Professional Dedicated Innovative Extreme



LKC Development

Process 力克川发展历程>>

理想，是事业的翅膀；
扎实，才能验证成功的轨迹。



2006—2011

第一阶段

- 2006年7月28日，青岛力克川液压机械有限公司注册成立。
July 28, 2006, Qingdao LKCHydraulic Machinery Co., Ltd. founded.
- 2006年12月26日，公司聘请原航空部液压专家成立研发团队。
December 26, 2006, employed senior engineers from Aerospace Ministry, established R&D Center.
- 2007年6月18日，第一台LTM18行走装置研制成功。
June 18, 2007, LTM18 Traveling Device developed successfully.
- 2008年1月—2010年12月期间LTM09、LTM07、LTM22行走装置；LSM30、LSM64回转装置；LXSB63变量柱塞泵、LPV28变量柱塞泵；L6V80和L6V107变量柱塞马达相继研制成功。
January 2008 to December 2010, LTM09/LTM07/LTM22 Travel device, LSM30/LSM64 Swing Device, LXSB63/LPV28 Variable Displacement Piston Pump, L6V80/L6V107 Variable Displacement Piston Motor, developed successfully.
- 2011年7月，确立“履带驱动装置专业制造商”战略发展目标；9月，成立广州凯锐斯通销售公司；10月，通过ISO9001质量管理体系认证；12月，与美国明尼苏达大学、浙江大学建立产学研基地。
July 2011, established Strategic Development Objective—Professional Manufacturer of Crawler Drive Device.
September 2011, Guangzhou Crystal Sales Company founded.
October 2011, passed ISO9001 quality management system certification.
December 2011, established the technical exchange platform with Minnesota University, building research base with Zhejiang University.

2011—2016

第二阶段

- 2012年1月—2016年12月LTM02、LTM04、LTM06、LTM10、LTM40系列行走装置、LSM10、LSM18、LSM24回转装置研制成功。
January 2012 to December 2016, LTM02/LTM04/LTM06/LTM10/LTM40 Series Travel Device, LSM10/LSM18/LSM24 Series Swing Device, developed successfully.
- 2012年3月，与韩国TIC株式会社达成战略合作。
March 2012, signed strategic cooperation agreement with Korea TIC Co.,Ltd.
- 2014年7月，启动“高端液压件自动化生产线”项目；9月，力克川学院成立。
July 2014, we started the project of high-end automatic hydraulic production line.
September 2014, LKC College founded.
- 2015年5月，“FMS智能柔性生产线”投产运营；7月，力克川战略营销委员会成立。
In May 2015, "FMS Intelligent flexible production line" was put into operation.
LKC Hydraulic Strategic Marketing Committee was formally established on July, 2015.
- 2016年3月，确立“液压驱动装置专业制造商”战略发展目标；9月，力克川液压技术研究所成立。
March 2016, established strategic development objective - Professional Manufacturer of Hydraulic Drives. LKC Hydraulic Technology Research Institute was established in September 2016.

2016至今

第三阶段

- 2017年9月—2021年9月LTM02EAK、LTM03、LTM04VB、LTM05B、LTM06N、LTM07VT、LTM09VB、LTM10X、LTM22X、LTM35、LTM40VT、LTM60、LK38行走装置，LSMN10、LSMN16、LSMN24/34、LSME30-19、LSME46、LSM2X63回转装置研制成功。
September 2017 to September 2021 LTM02EAK/LTM03/LTM04VB/LTM05B/LTM06N/LTM07VT/LTM09VB/LTM10X/LTM22X/LTM35/LTM40VT/LTM60/LK38 Travel Device, LSMN10/LSMN16/LSMN24/34/LSME30-19/LSME46/LSM2X63 Swing Device, developed successfully.
- 2017年5月，与上海交通大学、上海工程技术大学建立产学研合作基地。
In May 2017, Establish the cooperative relationship with Shanghaijiaotong University and Shanghai University of Engineering Science.
- 2019年4月，与兰州理工大学签订教学实习基地；8月，承办流体传动系统及元件词汇国家标准化会议。
April 2019, signed teaching practice base with Lanzhou University of Technology. August 2019, hosted the National Standardization Conference on the Vocabulary of Fluid Transmission Systems and Components.
- 2021年2月28日，年产17万台高端智能液压泵、液压阀、液压马达制造项目正式启动。
On February 28, 2021, the annual output of 170,000 pcs of high end intelligent hydraulic pumps, hydraulic valves and hydraulic Motors manufacture project was officially launched.



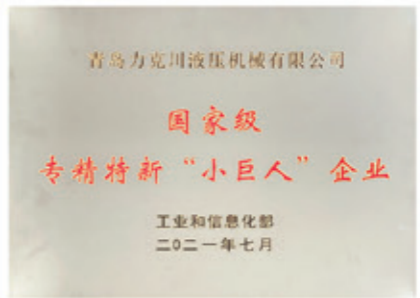
Enterprise 企业荣誉 >>

公司先后荣获“国家工业强基工程重点产品、工艺‘一条龙’应用计划示范企业”、“国家工信部工程机械高端液压件及液压系统产业化协同工作平台成员单位”、获评国家工信部重点专精特新“小巨人”、国家发改委先进制造业和现代服务业专项资金、“国家知识产权优势企业”、“国家高新技术企业”等荣誉，列入“全国机械用户满意产品名录”，获评山东省瞪羚企业、山东省首台（套）技术装备及关键核心零部件项目、山东省高端品牌培育企业、山东省高端装备领军企业等荣誉，被评为青岛市“隐形冠军”企业，入选“青岛高科技高成长20强”、“青岛市创新潜力20强”。

The company has successively won the titles of “Key Products of National Consolidation of Industrial Foundation Program, Demonstration Enterprise of One Package Application Plan”、“Member Unit of National Ministry of Industry and Information Technology Construction Machinery High-end Hydraulic Parts and Hydraulic System Industrialization Collaborative Work Platform”、Specialized and New “Little Giant” Enterprise of National Industry and Information Technology Department、National Development and Reform Commission Special Funds for Advanced Manufacturing and Modern Service Industries、National Intellectual Property Advantage Enterprise、National High-tech Enterprise, etc. The company was listed in the “National Machinery Customer Satisfaction Products List” and was appraised as the “Gazelle Enterprise” in Shandong Province、the first (set) technical equipment and key core parts project、the high-end brand cultivation enterprise in Shandong Province、the high-end equipment leading enterprise、the “Invisible Champion” enterprise in Qingdao. The company was also selected as “The top 20 high-tech high growth enterprises in Qingdao” and “The top 20 innovation potential enterprises in Qingdao”.

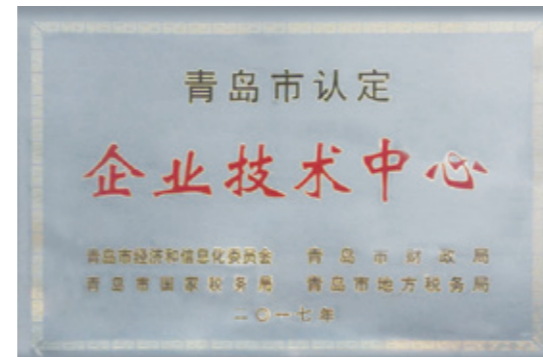


序号	企业名称	所属行业
1	山东重工集团有限公司	装备制造
2	潍柴动力股份有限公司	装备制造
3	山东重工集团工程机械事业部	装备制造
4	山东重工集团工程机械事业部	装备制造
5	山东重工集团工程机械事业部	装备制造
6	山东重工集团工程机械事业部	装备制造
7	山东重工集团工程机械事业部	装备制造
8	山东重工集团工程机械事业部	装备制造
9	山东重工集团工程机械事业部	装备制造
10	山东重工集团工程机械事业部	装备制造
11	山东重工集团工程机械事业部	装备制造
12	山东重工集团工程机械事业部	装备制造
13	山东重工集团工程机械事业部	装备制造
14	山东重工集团工程机械事业部	装备制造
15	山东重工集团工程机械事业部	装备制造
16	山东重工集团工程机械事业部	装备制造
17	山东重工集团工程机械事业部	装备制造
18	山东重工集团工程机械事业部	装备制造
19	山东重工集团工程机械事业部	装备制造
20	山东重工集团工程机械事业部	装备制造
21	山东重工集团工程机械事业部	装备制造



strength
R & D 研发实力>>

建有“青岛市企业技术中心”、“青岛市工程研究中心”“青岛市技术创新中心”等6项研发平台，拥有专业技术研发人员40余人，聘请国家航天部液压专家为总工程师，分别与浙江大学、兰州理工大学、燕山大学、德国亚琛大学等国内外知名院校建立产学研合作关系，成功研发23大系列323款产品，申请国家专利125项，其中液压马达超载负载自动复位处于国际先进、国内领先水平。



Established 6 R&D platforms such as the "Qingdao Enterprise Technology Center", "Qingdao Engineering Research Center", "Qingdao Technology Innovation Center", etc. LKC has more than 40 professional and technical R & D personnel, employed hydraulic experts from the Ministry of space technology as the chief engineer, and established industry-university-research cooperation relations with well-known universities at home and abroad, such as Zhejiang University, Lanzhou University of technology, Yanshan University, German Aachen University, etc. LKC has successfully developed 323 products in 23 series and applied for 125 national patents. The automatic reset technology for hydraulic motor overload is at the international advanced and domestic leading level.

Services
Marketing and 市场营销

从2006年至今十七年来，力克川坚持以“让客户满意是我们不懈的追求”的服务宗旨，以产品在出厂之前实现“保质、保供、保量”的交付原则，已成功配套服务于国内百余家知名主机厂，积极“走出去”与国际市场接轨，产品远销亚洲、欧洲、美洲等十余个国家和地区。力克川液压驱动装置产销量国内行业领先。

In the past 17 years since 2006, LKC has adhered to the service tenet of "customer satisfaction is our unremitting pursuit" and the delivery principle of "quality, supply and quantity" before leaving the factory. LKC has successfully provided supporting services to more than 100 well-known OEMs in China, actively "going out" to integrate with the international market, the products are exported to more than ten countries and regions in Asia, Europe and America. The production and sales volume of LKC hydraulic drive device is leading in the domestic industry.

Social responsibility 社会责任>>

力克川液压弘扬“用心铸造精品，用爱培育人品”的办企理念，以培养液压技术专业人才为己任，承担起社会责任。公司建有“力克川学院”、“力克川书画院”、设立“员工救助基金”，现为“山东省装备制造业协会液压行业分会会长单位”，“青岛市红岛经济区书法家协会员事单位”。

LKC Hydraulic promotes the enterprise concept of "casting high-quality products with heart and cultivating character with love", takes the cultivation of hydraulic technology professionals as its own responsibility, and undertakes social responsibilities. The company has established "LKC College", "LKC Calligraphy Academy" and "Employee Relief Fund". Now it is "President Unit of Shandong Provincial Equipment Manufacturing Association Hydraulic Industry Branch", "Director Unit of Qingdao Hongdao Economic Zone Calligrapher Association".

Planning
Strategic 战略规划>>

▶ 第一阶段 The First Stage:

以工程机械市场为主导应用领域，自主研发多元化液压产品。
Taking the construction machinery market as the leading application field, independently research and develop diversified hydraulic products.

▶ 第二阶段 The Second Stage:

聚焦矿山、桩工及挖掘机械，专注研发行走和回转装置。
Concentrate on mining, piling and excavation machinery, and focus on research and development of travel devices and swing devices

▶ 第三阶段 The Third Stage:

协同国内外专业液压件制造商与主机企业，结成战略联盟，发展成为液压系统集成制造商与服务商。
Cooperate with domestic and foreign professional hydraulic part manufacturers and OEMs to form a strategic alliance and develop into a hydraulic system integration manufacturer and service provider.



LKC College 力克川学院>>

力克川学院2014年9月28日成立，致力于积极推动公司发展战略的顺利实施，是公司变革的推动者和公司文化的宣传者。既是公司内部人才培养的“黄埔军校”，也是高端液压技术培训基地。

LKC College was established on September 28, 2014. It is committed to actively promoting the smooth implementation of the company's development strategy and it's also the promoter of corporate change and the propagandist of corporate culture. It is not only the "Whampoa Military Academy" for internal personnel training, but also the high-end hydraulic technology training base.



学院愿景 Vision:

培育高端优秀液压人才。
Cultivate high-end outstanding hydraulic talents.

学院使命 Mission:

打造高端液压培训“一站式”智力平台。
Create a "one-stop" intellectual platform for high-end hydraulic training.

学院价值观 Teaching mode:

诚信、奉献、创新、卓越、极致。
Integrity, Dedication, Innovation, Excellence, Ultimate.

Manufacturing and testing 制造与测试>>



公司通过ISO9001国际质量管理体系认证，拥有国际先进的FMS柔性加工生产线、桁架式自动加工线、自动化流水装配线，中央检测室配备了蔡司三坐标检测仪，日本粗糙度测量仪、轮廓仪，高精度气动测量仪、硬度计、齿轮测量仪等30余台套先进检测设备。公司FMS柔性加工生产线2018年获青岛市“555”自动化流水线项目荣誉称号；

LKC has passed the ISO9001 international quality management system certification and owns international advanced FMS flexible processing production line, truss automatic processing line and automatic assembly line. The central testing laboratory is equipped with more than 30 sets of advanced testing equipment, such as Zeiss CMM, Japanese roughness measuring instrument, profiler, high-precision pneumatic measuring instrument, hardness tester and gear measuring instrument. The company's FMS flexible processing production line won the honorary title of Qingdao "555" automated assembly line project in 2018;





微型系列行走马达 Micro Series Travel Motor

产品介绍 Product introduction

本产品为马达与减速机一体的行走装置。由双排量轴向柱塞马达、行星减速器组成。马达内置平衡阀、停车制动装置及高低档转换装置。特点：传动比大、结构紧凑、效率高、可靠性强、体积小、运行平稳、噪音低等。

Travel motor: This product is a traveling device integrated with motor and reducer. It consists of a double displacement axial piston motor and a planetary reducer. There is a built-in counter-balance valve, parking brake device and high and low shift device in the motor.

Features: large transmission ratio, compact structure, high efficiency, high reliability, small size, stable operation and low noise.

特点 Features

壳体旋转式，大传动比星型减速机。

Case rotation, large ratio planetary reducer.

轴向斜盘式柱塞马达、减速机，内置控制阀及驻车制动器集成式设计。

Axial swash plate piston motor, reducer, control valves and parking brake integrated.

二级变速模式：先导控制。

Two-speed shift model: Pilot control.

基于静液理论的关键元件优化设计，产品效率高，运转平稳，噪声低。

Based on hydrostatic theory to optimize key parts, ensure the motor high efficiency, stable operation and low noise.

关键元件设计裕量大，引用长寿命轴承及密封国际标准，产品可靠性高，寿命长。

Wide design margin of key parts, long-life bearing and international seal standard, make sure the motor high reliability and long life.

可选减速机便捷“抽拉轴机构”。

The convenient "release mechanism" for reducer is optional.

应用图片 Apply pictures



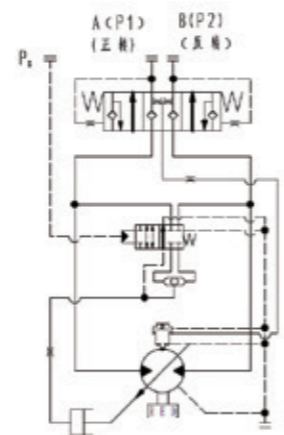
2吨履带挖掘机



2.5吨履带挖掘机

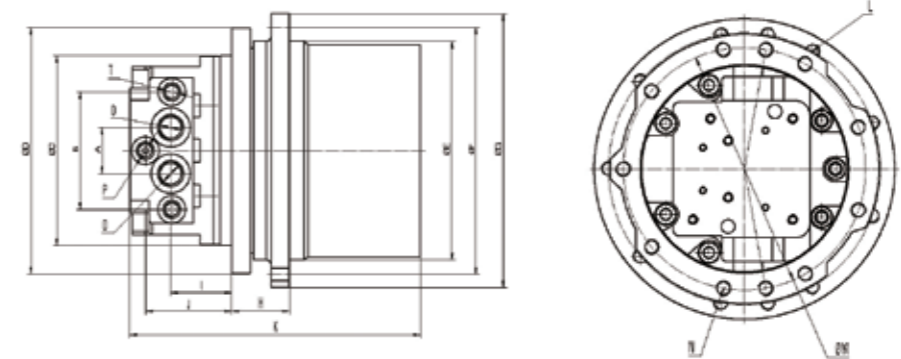


3.5吨履带挖掘机



外形尺寸和技术参数 Overall dimensions and technical parameters

型号 Model	最高工作压力 (Mpa) Max Working Pressure	最高输出转速 (r/min) Max Output Speed	适用吨位 (T) Applicable Tonnage
TM02	24.5	75	~ 1.5
TM03	24.5	70	~ 2.0
TM03A	24.5	50	~ 3.5
TM04	24.5	55	~ 4.5
TM06	27.5	55	~ 5.5



型号 Model	TM02	TM03	TM03A	TM04	TM06
A	33	33	40	40	40
B	86	86	102	102	102
C	140	150	165	165	180 (200)
D	175	190	215	215	246 (266)
E	140	160	190	210	230
F	155	180	215	232	262
G	175	200	238	255	288
H	45	40	50	70	75 (68)
I	43	58	48	48	48
J	58	74	68	68	88 (63)
K	200	227	252	280	340
L	9-M10	12-M10	11(9)-M12	12-M12	12-M14
M	155	170	192	192	220 (240)
N	8-M10	12-M10	11-M12	13 (9) -M12	9-M14
O	G3/8	G3/8	G1/2	G1/2	G1/2
P	G1/8	G1/8	G1/4	G1/4	G1/4
T	G1/4	G1/4	G1/4	G1/4	G1/4

详细尺寸参数以我司技术图纸为准。
Detailed dimension parameters shall be subject to our technical drawings.



小型系列行走马达 Small Series Travel Motor

产品介绍 Product introduction

本产品为马达与减速机一体的行走装置。由双排量轴向柱塞马达、行星减速器组成。马达内置平衡阀、停车制动装置及高低档转换装置。特点：传动比大、结构紧凑、效率高、可靠性强、体积小、运行平稳、噪音低等。

Travel motor: This product is a traveling device integrated with motor and reducer. It consists of a double displacement axial piston motor and a planetary reducer. There is a built-in counter-balance valve, parking brake device and high and low shift device in the motor.

Features: large transmission ratio, compact structure, high efficiency, high reliability, small size, stable operation and low noise.

特点 Features

壳体旋转式，大传动比星型减速机。

Case rotation, large ratio planetary reducer.

轴向斜盘式柱塞马达、减速机，内置控制阀及驻车制动器集成式设计。

Axial swash plate piston motor, reducer, control valves and parking brake integrated.

二级变速模式：先导控制。

Two-speed shift model: Pilot control.

基于静液理论的关键元件优化设计，产品效率高，运转平稳，噪声低。

Based on hydrostatic theory to optimize key parts, ensure the motor high efficiency, stable operation and low noise.

关键元件设计裕量大，引用长寿命轴承及密封国际标准，产品可靠性高，寿命长。

Wide design margin of key parts, long-life bearing and international seal standard, make sure the motor high reliability and long life.

可选减速机便捷“抽拉轴机构”。

The convenient "release mechanism" for reducer is optional.

应用图片 Apply pictures



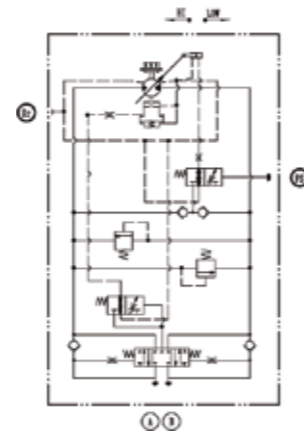
履带挖掘机



10吨水平定向钻

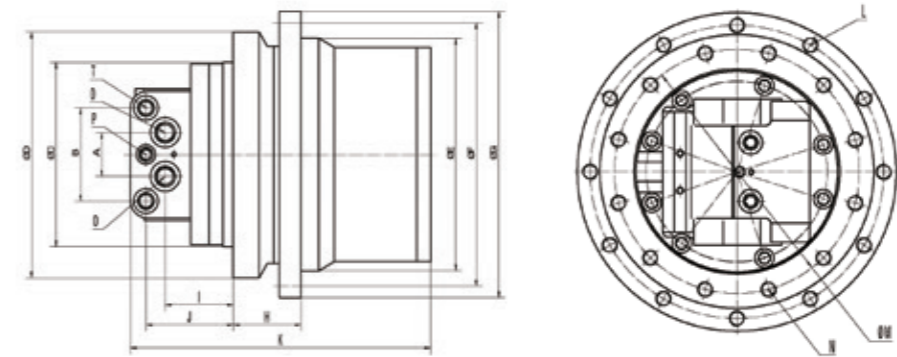


扒渣机



外形尺寸和技术参数 Overall dimensions and technical parameters

型号 Model	最高工作压力 (Mpa) Max Working Pressure	最高输出转速 (r/min) Max Output Speed	适用吨位 (T) Applicable Tonnage
TM07	31.5	50	~ 7
TM09	31.5	50	~ 9
TM10	27.5	50	~ 10
TM18	31.5	60	~ 12
TM22	31.5	55	~ 15
TM30	31.5	30	~ 18



型号 Model	TM07	TM09	TM10	TM18	TM22	TM30
A	50	50	50	50	50	50
B	106	106	106	116	116	116
C	210	210	210	246	246	246
D	268	280	280	308	308	308
E	250	265	265	324	324	324
F	282	300	300	364	364	364
G	306	326	326	394	394	394
H	68	80	80	100	100	100
I	78	78	78	87	87	87
J	109.5	149	149	118	118	118
K	356	362	362	414	414	488
L	12-M14	12-M14	12-M14	15-M16	15-M16	15-M16
M	244	250	250	280	280	280
N	12-M14	12-M16	12-M16	20-M16	20-M16	20-M16
O	G1/2	G1/2	G1/2	G3/4	G3/4	G3/4
P	G1/4	G1/4	G1/4	G1/4	G1/4	G1/4
T	G3/8	G3/8	G3/8	G1/2	G1/2	G1/2

详细尺寸参数以我司技术图纸为准。
Detailed dimension parameters shall be subject to our technical drawings.



中型系列行走马达 Medium Series Travel Motor

产品介绍 Product introduction

本产品为马达与减速机一体的行走装置。由双排量轴向柱塞马达、行星减速器组成。马达内置平衡阀、停车制动装置及高低档转换装置。特点：传动比大、结构紧凑、效率高、可靠性强、体积小、运行平稳、噪音低等。

Travel motor: This product is a traveling device integrated with motor and reducer. It consists of a double displacement axial piston motor and a planetary reducer. There is a built-in counter-balance valve, parking brake device and high and low shift device in the motor.

Features: large transmission ratio, compact structure, high efficiency, high reliability, small size, stable operation and low noise.

特点 Features

壳体旋转式，大传动比星型减速机。

Case rotation, large ratio planetary reducer.

轴向斜盘式柱塞马达、减速机，内置控制阀及驻车制动器集成式设计。

Axial swash plate piston motor, reducer, control valves and parking brake integrated.

二级变速模式：先导控制。

Two-speed shift model: Pilot control.

基于静液理论的关键元件优化设计，产品效率高，运转平稳，噪声低。

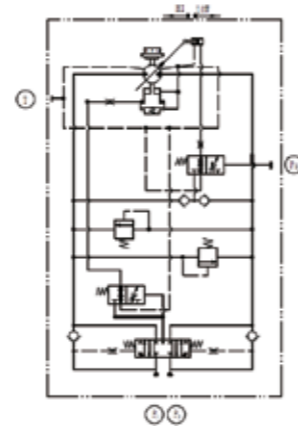
Based on hydrostatic theory to optimize key parts, ensure the motor high efficiency, stable operation and low noise.

关键元件设计裕量大，引用长寿命轴承及密封国际标准，产品可靠性高，寿命长。

Wide design margin of key parts, long-life bearing and international seal standard, make sure the motor high reliability and long life.

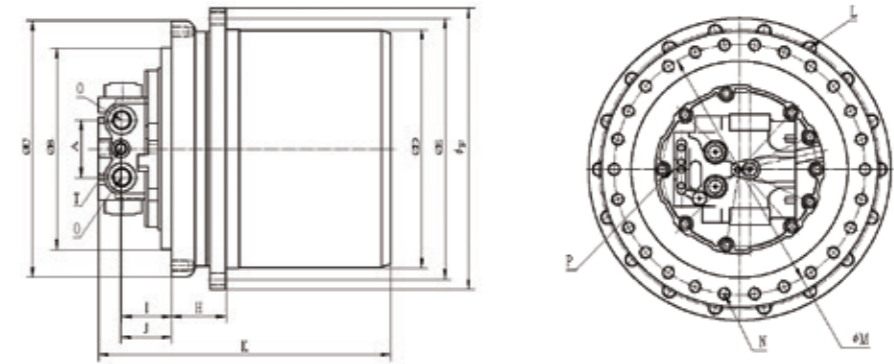
可选减速机便捷“抽拉轴机构”。

The convenient "release mechanism" for reducer is optional.



外形尺寸和技术参数 Overall dimensions and technical parameters

型号 Model	最高工作压力 (Mpa) Max Working Pressure	最高输出转速 (r/min) Max Output Speed	适用吨位 (T) Applicable Tonnage
TM40	34.5	50	~ 25
TM60	34.5	50	~ 30



型号 Model	TM40	TM60
A	108	108
B	300	300
C	370	484
D	402	450
E	440	492
F	470	530
H	98	102
I	130	94
J	132	96
K	548	554
L	30-M16	18-M24
M	340	440
N	30-M16	26-M20
O	G1	G1
P	G1/4	G1/4
T	G1/2	G1/2

详细尺寸参数以我司技术图纸为准。
Detailed dimension parameters shall be subject to our technical drawings.

应用图片 Apply pictures



20吨履带挖掘机



扒渣机



摊铺机



闭式系统行走马达 Closed System Travel Motor

产品介绍 Product introduction

本产品为马达与减速机一体的液压行走装置。由双排量轴向柱塞马达、行星减速器组成。马达内置冲洗阀、高低档切换阀、外置驻车制动阀。特点：传动比大、结构紧凑、效率高、可靠性强，体积小、运行平稳、噪音低等。

Closed system travel motor: This product is a hydraulic traveling device integrated with motor and reducer. It consists of a double displacement axial piston motor and a planetary reducer. There is a built-in flus valve, high and low shift valve, external brake control valve in the motor.

Features: large transmission ratio, compact structure, high efficiency, high reliability, small size, stable operation and low noise.

特点 Features

壳体旋转式，大传动比星型减速机。

Case rotation, large ratio planetary reducer.

轴向斜盘式柱塞马达、减速机，内置控制阀及驻车制动器集成式设计。

Axial swash plate piston motor, reducer, control valves and parking brake integrated.

二级变速模式：先导控制。

Two-speed shift model: Pilot control.

基于静液理论的关键元件优化设计，产品效率高，运转平稳，噪声低。

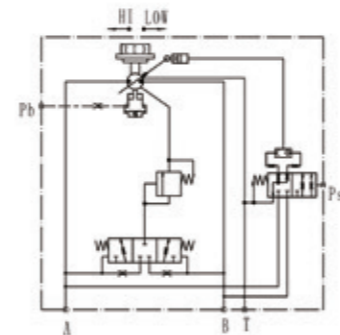
Based on hydrostatic theory to optimize key parts, ensure the motor high efficiency, stable operation and low noise

关键元件设计裕量大，引用长寿命轴承及密封国际标准，产品可靠性高，寿命长。

Wide design margin of key parts, long-life bearing and international seal standard, make sure the motor high reliability and long life.

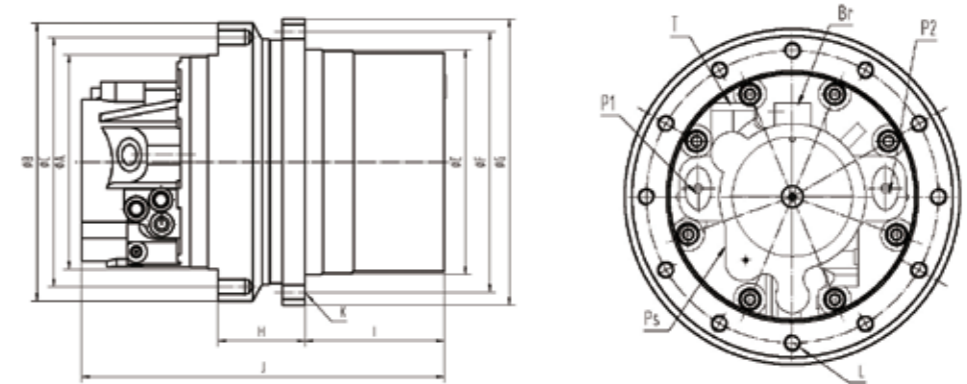
可选减速机便捷“抽拉轴机构”。

The convenient "release mechanism" for reducer is optional.



外形尺寸和技术参数 Overall dimensions and technical parameters

型号 Model	最高工作压力 (Mpa) Max Working Pressure	最高输出转速 (r/min) Max Output Speed	适用吨位 (T) Applicable Tonnage
TM04VB	27.5	110	~ 3.5
TM07VB	27.5	70	~ 5
TM09VB	31.5	50	~ 7



型号 Model	TM04VB	TM07VB	TM09VB
A	210	210	210
B	268	268	268
C	244	244	244
E	230	250	250
F	260	265	265
G	286	300	300
H	85	80	80
I	146	146	146
J	356	362	362
K	12-M16	12-M16	12-M14
L	12-M16	12-M16	12-M14
P1/P2		1" -1/16-12UNF	
Ps		9/16" -18 UNF	
T		3/4" -16 UNF	
Br		9/16" -18 UNF	

详细尺寸参数以我司技术图纸为准。
Detailed dimension parameters shall be subject to our technical drawings.

应用图片 Apply pictures



滑移装载机



履带收割机



摊铺机



微型系列回转马达 Micro Series Swing Motor

产品介绍 Product introduction

本产品为斜盘式直轴液压马达驱动的回转装置。马达内部装有补油阀、回转制动器、溢流阀等辅件，保证了回转装置运转平稳，安全可靠。特点：结构简单、体积小、噪音低。

Swing motor: This product is a swing device driven by a swash plate type straight axis hydraulic motor. There are built-in accessories like oil filling valve, rotary brake and relief valve to ensure stable and safe operation of the swing device.

Features: simple structure, small size and low noise.

特点 Features

轴向斜盘式柱塞马达、补油阀，回转制动器及溢流阀集成式设计。

Axial swash plate piston motor, integrated design of filling valve, rotary brake and relief valve.

基于静液理论的关键元件优化设计，产品效率高，运转平稳，噪声低。

Based on the hydrostatic theory to optimize key parts, ensure the motor high efficiency, stable operation and low noise.

关键元件设计裕量大，引用长寿命轴承及密封国际标准，产品可靠性高，寿命长。

Wide design margin of key parts, long-life bearing and international seal standard, make sure the motor keep high reliability and long life.

应用图片 Apply pictures



履带挖掘机



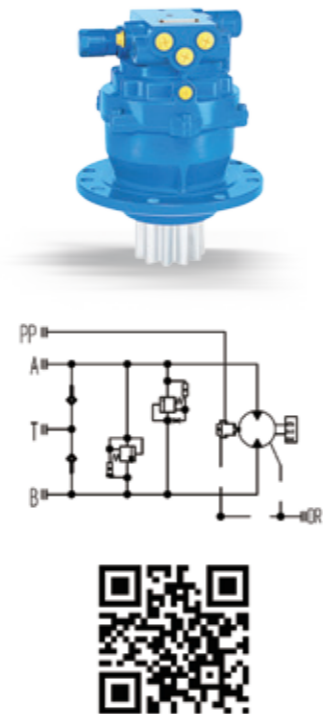
轮式挖掘机



钻机

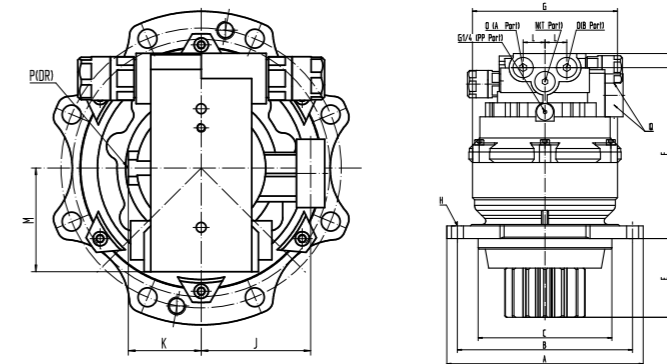


属具



外形尺寸和技术参数 Overall dimensions and technical parameters

型号 Model	最高工作压力 (Mpa) Max Working Pressure	最高输出转速 (r/min) Max Output Speed	适用吨位 (T) Applicable Tonnage
LSMN-10-10	21.6	60	~2.5
LSMN-16-21	21.6	90	~3.5
LSMN-24-21	21.6	100	~5
LSMN-34-23	21.6	60	~6



型号 Model	LSMN-10-10	LSMN-16-21	LSMN-24-21	LSMN-34-23
A	Φ193	Φ242	Φ248	Φ280
B	Φ168	Φ210	Φ220	Φ250
C	Φ110	Φ150	Φ175	Φ190
D	264	283	323	368
E	67	96	94	105
F	178	168	208	243
G	162	208	215	240
H	4-Φ13	6-Φ17	10-Φ17	8-Φ17
J	103	101.5	84.5	96
K	59.5	66.5	61.5	65.5
L	2-25.5	2-25.5	2-25.5	2-31
M	98.5	83	83	93
N	G3/8	G3/8	G3/8	G1/2
O	2-G3/8	2-G3/8	2-G3/8	2-G1/2
P	G3/8	G3/8	G3/8	G3/8
Q	2-G1/4	2-G1/4	2-G1/4	2-G1/4

详细尺寸参数以我司技术图纸为准。
Detailed dimension parameters shall be subject to our technical drawings.

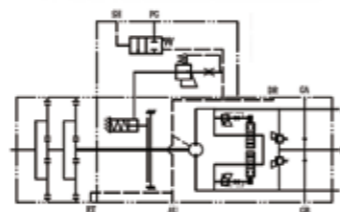


中小型系列回转马达 Small and Medium Series Swing Motor

产品介绍 Product introduction

本产品为斜盘式直轴液压马达驱动的回转装置。马达内部装有补油阀、回转制动器、溢流阀等辅件，保证了回转装置运转平稳，安全可靠。特点：结构简单、体积小、噪音低。

Swing motor: This product is a swing device driven by a swash plate type straight axis hydraulic motor. There are built-in accessories like oil filling valve, rotary brake and relief valve to ensure stable and safe operation of the swing device.
Features: simple structure, small size and low noise.



特点 Features

轴向斜盘式柱塞马达、补油阀，回转制动器及溢流阀集成式设计。

Axial swash plate piston motor, integrated design of filling valve, rotary brake and relief valve.

基于静液理论的关键元件优化设计，产品效率高，运转平稳，噪声低。

Based on the hydrostatic theory to optimize key parts, ensure the motor high efficiency, stable operation and low noise.

关键元件设计裕量大，引用长寿命轴承及密封国际标准，产品可靠性高，寿命长。

Wide design margin of key parts, long-life bearing and international seal standard, make sure the motor keep high reliability and long life.

应用图片 Apply pictures



履带挖掘机



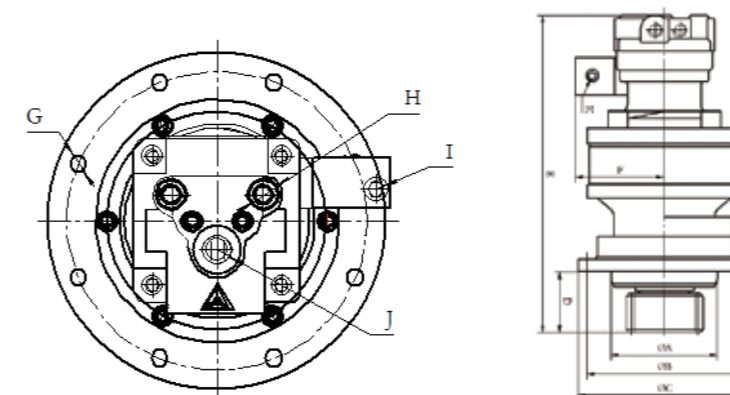
轮式挖掘机



钻机

外形尺寸和技术参数 Overall dimensions and technical parameters

型号 Model	最高工作压力 (Mpa) Max Working Pressure	最高输出转速 (r/min) Max Output Speed	适用吨位 (T) Applicable Tonnage
LSME-33-19	25	102	6~8
LSME-43-19	25	102	6~8
LSMC-63-19	29.4	115	~12
LSMC-130-20	32.4	92	~20
LSMC-180-22	32.4	84	~25
LSMC-180-25	32.4	67	~30



型号 Model	LSME-33-19	LSME-43-19	LSMC-63-19	LSMC-130-20	LSMC-180-22	LSMC-180-25
A	200	200	200	310	345	380
B	275	275	290	360	400	484
C	311	311	323	410	450	528
D	98.5	98.5	113	162	179	182
E	502	502	487	567	649	676
F	160	160	124.5	118	131	131
G	7-Φ18 (Φ18)	7-Φ18 (Φ18)	9-Φ18+ 1-Φ20	11-Φ22+ 1-Φ24	13-Φ22+ 1-Φ24	14-Φ25
H	G1/4"	G1/4"	2-Φ13	2-Φ20	2-Φ20	2-Φ20
J	G3/4"	G3/4"	G1/4"	G1/4"	G1/4"	G1/4"
K	G3/4"	G3/4"	G3/4"	G3/4"	G1"	G1"
L	G1/4"	G1/4"	G1/4"	G1/4"	G1/4"	G1/4"

详细尺寸参数以我司技术图纸为准。
Detailed dimension parameters shall be subject to our technical drawings.



LK马达系列 LK motor series

产品介绍 Product introduction

LK系列斜盘式变量柱塞马达是针对高空作业平台设备，液压井下掘进设备，光伏清洗设备，物流智能作业平台等计。

LK series swashplate variable displacement piston motors are designed for aerial platform equipment, hydraulic underground drilling equipment, photovoltaic cleaning equipment, Logistic intelligent operation platform

特点 Features

超高压，大转速。

Ultra high pressure, high speed.

有效斜盘摆角范围 $5^{\circ} - 18^{\circ}$ ，低速模式更强劲，高速模式更敏捷。

The valid range of swash plate angle is $5^{\circ} - 18^{\circ}$, Ensure low-speed mode is more powerful and the high-speed is more agile.

插装式设计，体积小，重量轻，安装空间紧凑。

Cartridge mounting design, small size, light weight, compact installation space.

基于静液理论的关键元件优化设计，产品效率高，运转平稳，噪声低。

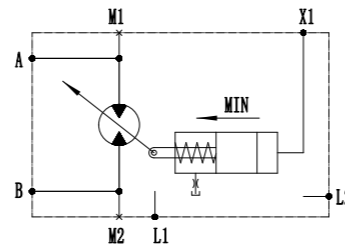
Based on the hydrostatic theory to optimize key parts, ensure the motor high efficiency, stable operation and low noise.

新型高压重载摩擦副配对材料引入。

The introduction of new high-pressure heavy-duty friction pair matching materials.

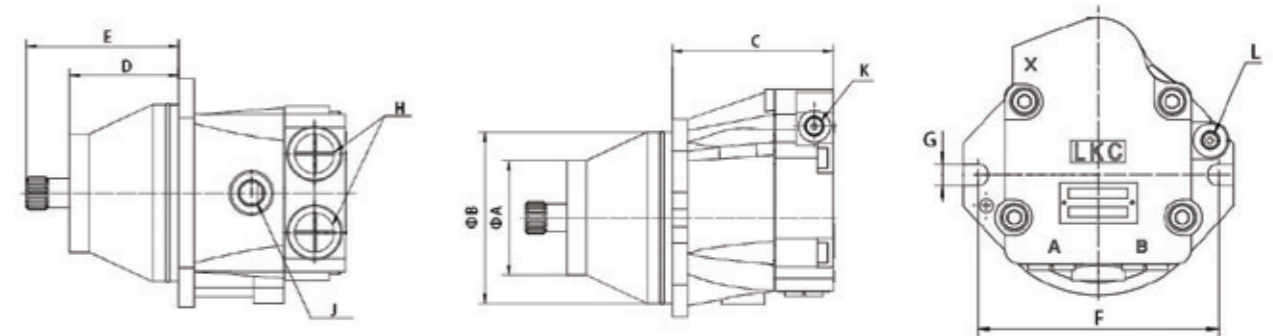
关键元件设计裕量大，引用长寿命轴承及密封国际标准，产品可靠性强，寿命长。

Wide design margin of key parts, long-life bearing and international seal standard, make sure the motor high reliability and long life.



外形尺寸和技术参数 Overall dimensions and technical parameters

型号 Model	最大排量 (cc/rev)	最小排量 (cc/rev)	旋转方向 Direction of rotation	最高输出转速 (rpm)		最高工作压力 (bar)
				最大排量下 At maximum displacement	最小排量下 At minimum displacement	
LK25	25	可按需求调节 Adjustable according to demand	双向 two-way	3950	5000	40
LK30	30			4150	5150	40
LK38	38			4000	5200	40
LK45	45			3900	5050	40



应用图片 Apply pictures



履带高空作业车



履带救援车



铣刨机

型号 Model	LK25	LK30	LK38	LK45
A	90	90	90	90
B	135	135	135	135
C	126.7	126.7	126.7	126.7
D	83	83	83	83
E	116	116	116	116
F	155	155	155	155
G	2X14	2X14	2X14	2X14
H	1-1/16-12UNF	1-1/16-12UNF	1-1/16-12UNF	1-1/16-12UNF
J	3/4-16UNF	3/4-16UNF	3/4-16UNF	3/4-16UNF
K	9/16-18	9/16-18	9/16-18	9/16-18
L	9/16-20	9/16-20	9/16-20	9/16-20

详细尺寸参数以我司技术图纸为准。
Detailed dimension parameters shall be subject to our technical drawings.

APPLICATIONS



微型系列行走马达
Micro Series Travel Motor



小型系列行走马达
Small Series Travel Motor



闭式系统行走马达
Closed System Travel Motor



中型系列行走马达
Medium Series Travel Motor



微型系列回转马达
Micro System Swing Motor



微型系列回转马达
Micro System Swing Motor



中小型系列回转马达
Small and Medium Swing Motor



中小型系列回转马达
Small and Medium Swing Motor

